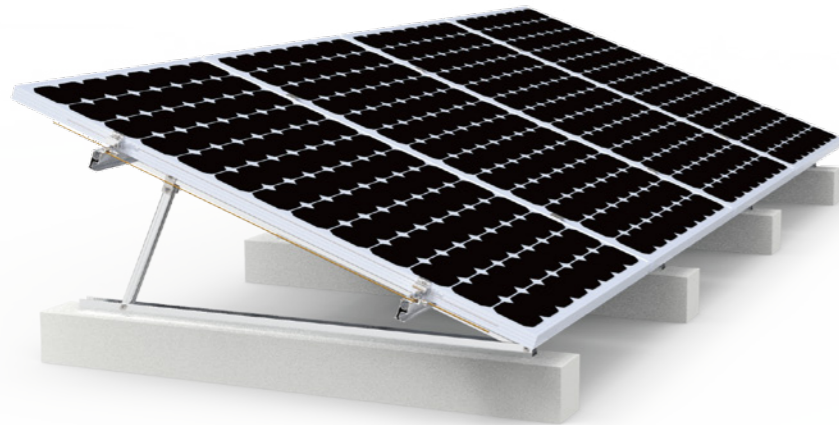


Flat Roof & Ground Mount



Code: SR-TP-S

Standard tripod rack, for single row module installation. Ideal for small installation on roof or ground.
Various elevations 15,20,25,30 or custom elevations available.

Technical features:	
Product name	Standard tripod rack SR-TP-S
Application	Flat roof or open terrain
Inclination	15°,20°,25°,30°
Tripod material	Aluminum alloy 6005 T5
finish	Anodized clear, avg 12um
PV module	Framed,unframed
Module size	60 or 72cell
Module orientation	Portrait



Code: SR-TP-DP

DP tripod rack, ideal for small installation on roof or ground with double rows of module in portrait.
Various elevations 15,20,25,30 or custom elevations available.

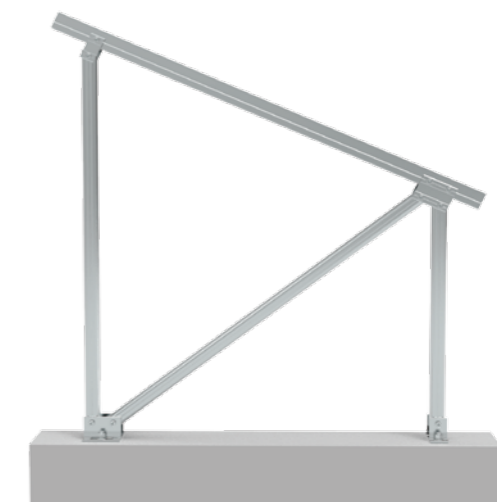
Technical features:	
Product name	DP tripod rack SR-TP-NH
Application	Flat roof or open terrain
Inclination	15°,20°,25°,30°
Tripod material	Aluminum alloy 6005 T5
finish	Anodized clear, avg 12um
PV module	Framed,unframed
Module size	60 cell
Module orientation	Portrait

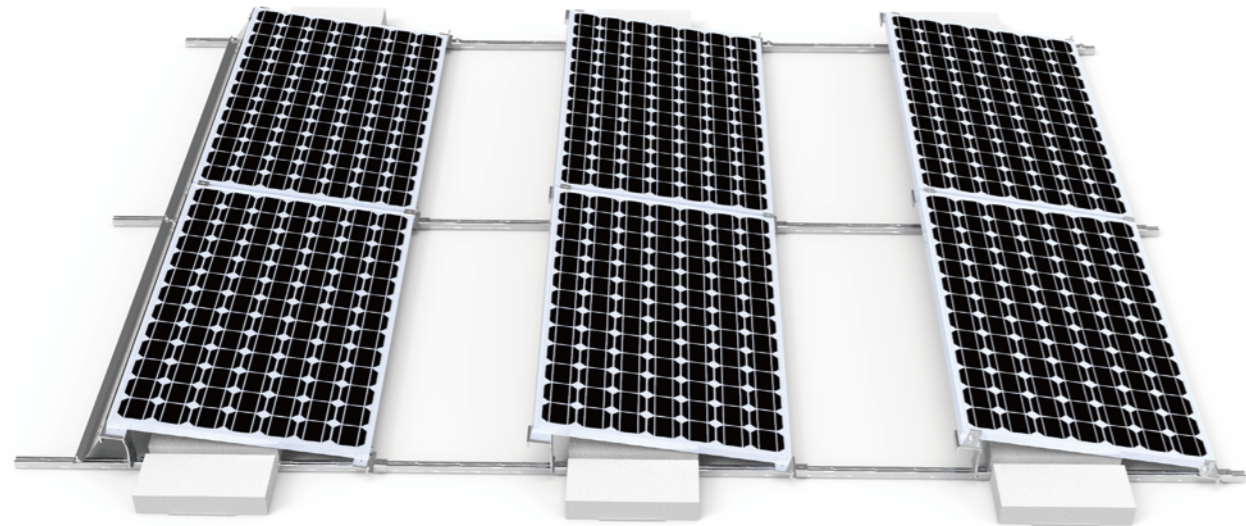


Code: SR-TP-NH

NH tripod rack, ideal for small installation on roof or ground with a specific designed height.
Various elevations 15,20,25,30 or custom elevations available.
Module height from ground: 500mm-1000mm or custom.

Technical features:	
Product name	NH tripod rack SR-TP-NH
Application	Flat roof or open terrain
Inclination	15°,20°,25°,30°
Tripod material	Aluminum alloy 6005 T5
finish	Anodized clear, avg 12um
PV module	Framed,unframed
Module size	60 or 72cell
Module orientation	Portrait

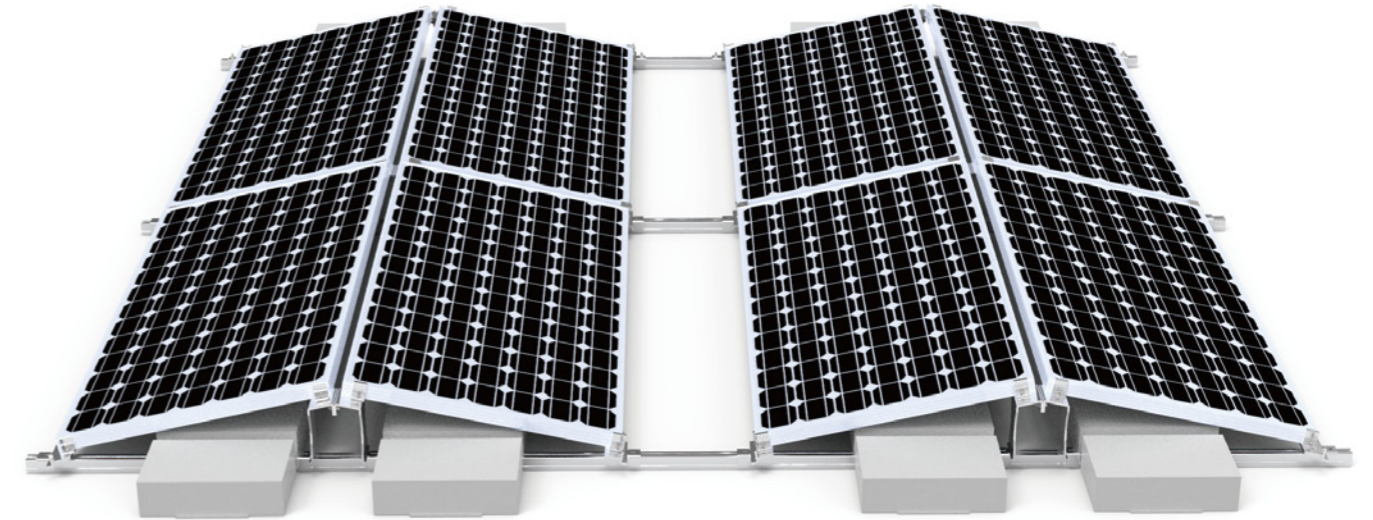




Code: SR-BM-S

Ballast mount, ideal for solar solar installation on flat roof with south or North direction.

Technical features:	
Product name	Ballst mount SR-BM-S
Application	flat roof
Inclination	5°~15°
Ballast material	AL5052-H32
Finish	anodized clear, avg 12um
PV module	framed, unframed
Module size	60 or 72 cell
Module direction	South or North
Module orientation	landscape

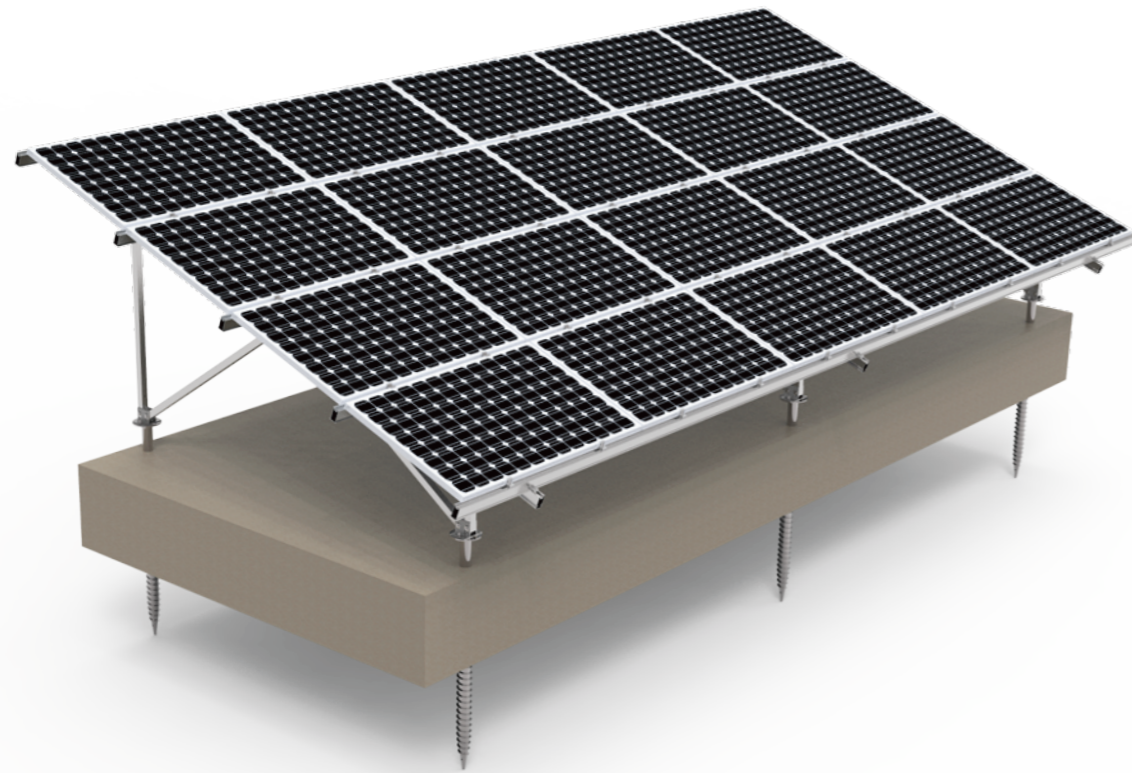


Code: SR-BM-EW

Ballast mount, ideal for solar solar installation on flat roof with a East-West direction.

Technical features:	
Product name	Ballst mount SR-BM-EW
Application	flat roof
Inclination	5°~15°
Ballast material	AL5052-H32
Finish	anodized clear, avg 12um
PV module	framed, unframed
Module size	60 or 72 cell
Module direction	East-West
Module orientation	landscape



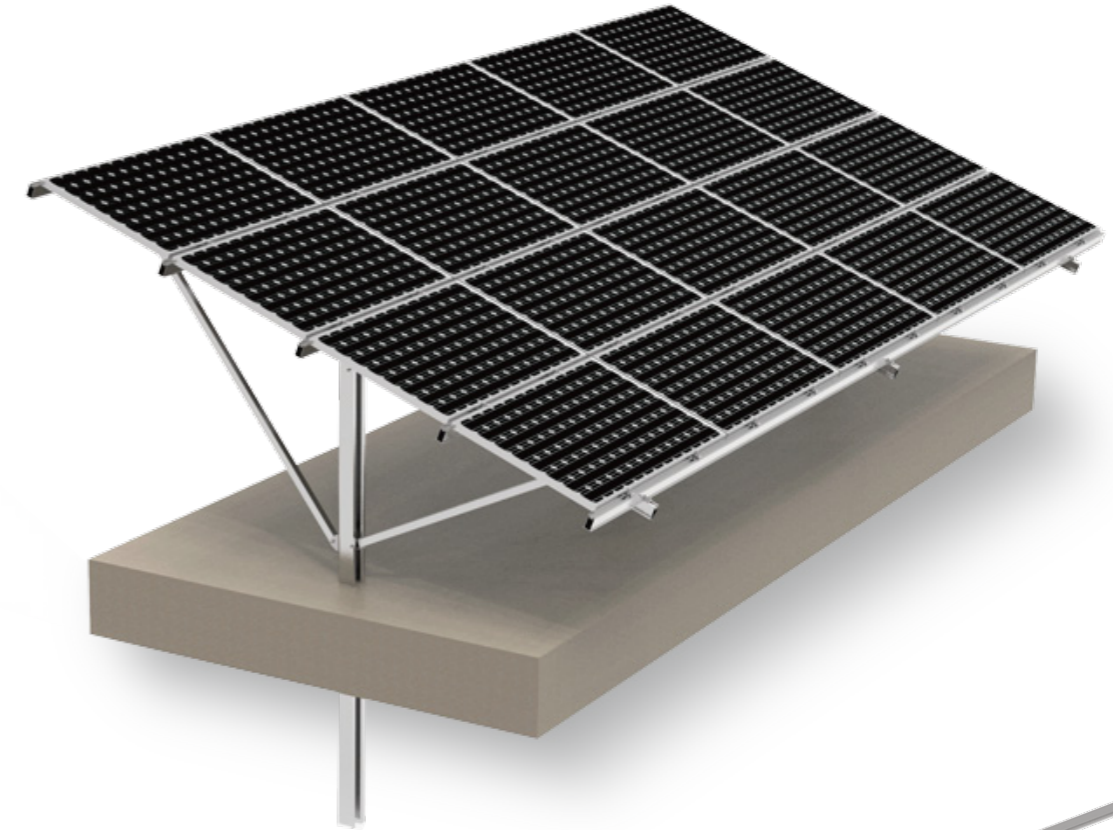


Code: SR-GM-W

Aluminum ground mount, optimized for lightweight, quick and efficient installation with flexible engineering upon site conditions.
Optional on foundation by ground screw or concrete.
Highly-pre-fabrication before shipment



Technical features:	
Product name	Pile-driven ground mount
Application	ground or open terrain
Inclination	10°~45° or custom
Material	HDG steel pile, aluminum 6005 T5 racking,
Finish	anodized clear, avg 12um
PV module	framed, unframed
Module size	60 or 72 cell
Module orientation	landscape or portrait



Code: SR-GM-P

Ground mount with pile-driven foundations, optimized for project-specific planning, excellent material efficiency, quick and simple mounting
HDG steel pile with aluminum strut, beam, rails and clamps.
Highly-pre-fabrication before shipment



Technical features:	
Product name	Aluminum W ground mount
Application	ground or open terrain
Inclination	10°~45° or custom
Material	Aluminum 6005 T5 racking, HDG steel ground screw
Finish	anodized clear, avg 12um
PV module	framed, unframed
Module size	60 or 72 cell
Module orientation	landscape or portrait



www.lockseam.net

Lockseam

A racking brand of Supersun Solar

Add: #2302, Bld 16, Wanda Huacheng, Ningde, Fujian, China 352100

Tel: + 0086 593 2826290

Web: www.lockseam.net

Alibaba: lockseam.en.alibaba.com

 info@lockseam.net